

ProFace X [P]

Face & Palm Verification Terminal with Mask Detection



ProFace X [P]



Palm



Face

ProFace X [P] is a fully upgraded version of the ProFace product line, which is designed to deal with all kinds of scenarios. Powered by the ZKTeco-customized CPU for running the intellectualized engineering facial recognition algorithm and the latest computer vision technology, the ProFace X [P] supports both facial and palm verification with large capacity and rapid recognition speed, boosting the security performance in all aspects.

ProFace X [P] also helps eliminate hygiene concerns; not only because of the contactless recognition technology it is equipped with, but also because of the masked individual identification.

The facial recognition capability has reached a new height in the biometrics technology industry with a maximum of 50,000 facial templates, recognition speed of less than 0.3 sec per face, and ultimate anti-spoofing ability against almost all types of fake photos and videos attack.

In addition, the 3-in-1 palm recognition (Palm Shape, Palm Print and Palm Vein) is performed in 0.35 sec per hand; the palm data acquired will be compared with a maximum of 5,000 palm templates.

As mentioned above, the ProFace X [P] can assist in reducing the risk of infection and germs spreading during the recent global public health issue as well. It enables masked individual identification during facial and palm verification at all access points, especially in hospitals, factories, schools, commercial buildings, airports, stations, and other public areas.

Features

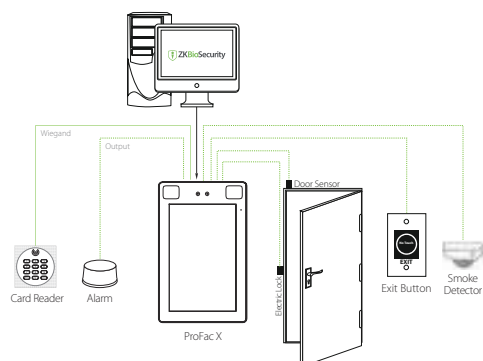
- Ultra-large capacity of facial templates for 1:N verification: 30,000 (standard); max. 50,000 (optional)
- Huge capacity of palm templates; 1:N - 5,000 palm templates
- Anti-spoofing algorithm against print attack (laser, color and B/W photos), videos attack, and 3D mask attack
- Intelligent energy-saving design; precisely evaluation of the distance (up to 2.5m (8.2ft)) between the user and the device by a microwave detector before waking up the recognition terminal
- 2MP starlight CMOS sensor camera with WDR function, which enables the terminal to recognize faces under extreme lighting conditions (0.5 lux – 50,000 lux)
- 8" touch screen with 400 lux, which offers high visibility under strong and direct light
- IP68 dust-proof and waterproof standard & IK04 protection standard
- Wide range of working temperature (-30 ~ 60°C; -22 ~ 140°F)
- Mask detection; facial verification available with masks

* Facial verification for masked individuals will increase FAR. Palm verification for masked individuals is recommended.

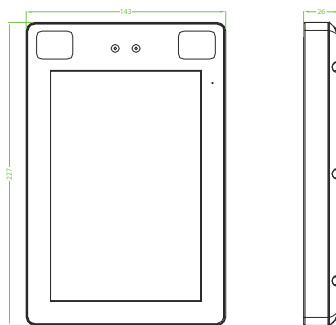
Specifications (G: GL Exclusive Feature)

Capacity	Access Control Interface	Communication
G Faces	Lock Relay Output	TCP/IP
	Alarm Output / Auxiliary Input	Wiegand Input / Output
Palm	Exit Button / Door Sensor	Wi-Fi (Optional)
Users / Cards		RS485 / RS232
G Transactions	Special Functions	Additional Info
	G IP68 & IK04	Face Algorithm: ZKLiveFace5.8
User Photos	G 0.3s High Speed Facial Verification	Palm: FAR ≤0.01%; FRR ≤1%
Event Photos	Liveness Detection	Working Temperature: -30°C ~ 60°C, (-22°F ~ 140°F)
	HTTPS Communication Encryption (Optional)	Working Humidity: ≤93%
Compatibility	G Event Snapshot	Storage Temperature: -40°C ~ 65°C (-40°F ~ 149°F)
Security Relay Box	Hardware	Storage Humidity: ≤93%
Wiegand / RS485 / RS232 Slave Reader	900MHz Dual Core Customized AI CPU	Net Weight: 853g
with FP / RFID / Barc ode / QR-code	G 512MB RAM / 8G Flash	Dimensions (H*L*D): 227*143*26.1mm
ZKBioSecurity Software	G 8" Hight light (400lux) IPS Touch LCD	
Standard Functions:	125KHz EM Reader / 13.56MHz MF(Optional)	
Access Levels, Groups, Holidays, DST,	G 2MP WDR Low Light Camera	Power
Duress Mode (Password), Anti-Passback,	Adjustable Light brightness LED	Operating Voltage: 12V DC
Record Query, Tamper Switch Alarm,	Hi-Fi Voice	Current Draw: < 2,000mA
Custom Wallpaper & Screen Saver	High Sensitivity Microphone	
	Distance Detection Sensor	
	Reset Button and Tamper Switch	

Configuration



Dimensions (mm)



ZKTECO EUROPE
www.zkteco.eu
E-mail: sales@zkteco.eu

Copyright©2020 ZKTECO CO., LTD. All rights reserved.
V2.0 2020.03.31