

# User Manual of DS-6001FI Embedded Decoder Server

## Index

CHAPTER 1	INTRODUCTION .....	4
CHAPTER 2	INSTALLATION .....	5
2.1	HARDWARE INSTALLATION.....	5
2.1.1	Installation steps.....	5
2.1.2	Installation notice.....	5
2.2	PANEL DESCRIPTION .....	5
2.3	THE PIN DEFINITION OF PHYSICS INTERFACES .....	7
2.3.1	PIN definition of RS-232 port.....	7
2.3.2	PIN definition of RS485 port.....	9
2.3.3	PIN definition of Ethernet port .....	9
CHAPTER 3	VIDEO SERVER SETUP .....	11
3.1	PARAMETER SETUP THROUGH RS-232 SERIAL PORT .....	11
3.1.1	Hyper Terminal Setup .....	11
3.1.2	Shell Commands under Hyper Terminal .....	14
3.2	PTZ CONTROL .....	17
CHAPTER 4	UPGRADE FIRMWARE.....	18
4.1	USE SHELL COMMAND AND FTP SERVER .....	18
4.2	USE CLIENT SOFTWARE TO UPGRADE FIRMWARE.....	21
CHAPTER 5	FREQUENT ASK QUESTIONS.....	22
APPENDIX A	DS-6001FI SPECIFICATIONS .....	23
APPENDIX B	GOOD LIST.....	24
APPENDIX C	CUSTOMER INFORMATION CARD .....	25

Thanks for purchasing the products of Hikvision. If you have any requests or questions, please contact us immediately.

This manual is applicable to DS-6001FI Decoding Video Server

This manual may contain some technically incorrect places or printing errors. This manual will be updated on a regular basis without additional specific notice. The updates will be added to the new version of this manual. We will readily improve and update the products or procedures described in the manual.

# Chapter 1 Introduction

DS-6001FI series video server adopts embedded real-time multi-task operation system (RTOS) and embedded processor, which is completely independent of PC platform, and efficiently improves system performance. Firmware is burned into the FLASH, making the system more steady and reliable.

DS-6001FI video server is both an encoder and decoder. It has one channel video input, can compress the video signal into H.264 real time stream, and transmit the live stream through network. It also has one channel video output to decompress the H.264 stream from other Hikvision Net DVR, DVS.

## Chapter 2 Installation

### 2.1 Hardware installation

#### 2.1.1 Installation steps

1. Open packing case, and check the integrity;
2. Take out things needed in installation;
3. Connect cables needed (video signal input cable, audio signal input cable, RS485 cable and cable for LAN);
4. Take out stabilizer power supply and power on.

#### 2.1.2 Installation notice

Please read the following notice carefully. If you have any question, please contact us.

**Notice:**

1. After Opening the packing box, please check carefully to confirm that the goods in it are consistent with list;
2. Please read user's manual carefully before installation;
3. Please power-off all related equipments before installation;
4. **Please check the voltage of power supply to avoid voltage mismatch;**
5. Installation environmental: Do not use it under humidity and high temperature; to keep ventilation to vent freely, avoid to be walled up; to keep them horizontally, avoid setting up in the vibration surroundings.

### 2.2 Panel description

**Front panel:**



DS-6001FI Front Panel

Interface Instruction (From left to right in turn)

1. Power supply indicator lamp;
2. Link indicator lamp;
3. Tx/Rx indicator lamp;
4. RS232 interface;
5. 4 Sensor alarm input and 2 replay output interface;
6. USB interface (reserved).

**Back panel:**



DS-6001FI Rear Panel

Interface Instruction(From left to Right in return):

1. For DS-6001FI, there is video input connector on the left side of video output;
2. One line in audio input;
3. One audio output;
4. UTP network interface;
5. RS-485 interface;
6. Power jack is connected with DC 12V. Please use the stabilizer power supply correctly;

## 2.3 The pin definition of physics interfaces

### 2.3.1 PIN definition of RS-232 port

The Decoder has one RS232 standard serial interface, with RJ-45 connector. Its pin definition is as follows ('I' means input, and 'O' means output):

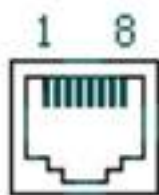
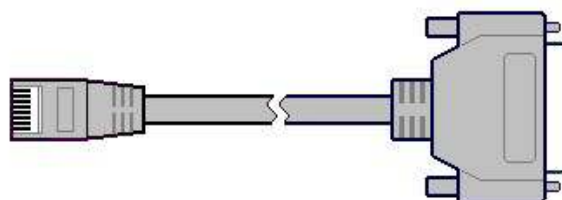


Fig 2.1 RJ-45

Table 2.1 Pin definition of RS232 serial port

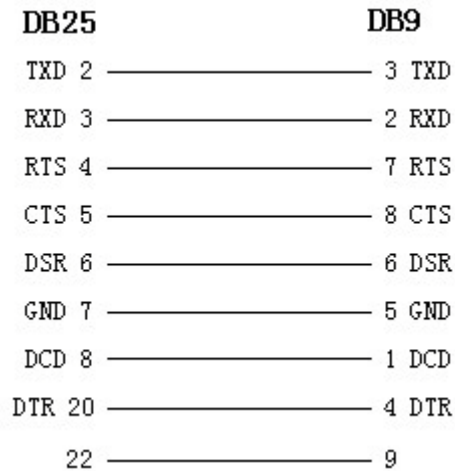
Pin No	Name	I/O	Explanation
1	DCD	I	Carrier Detect
2	RxD	I	Receive
3	TxD	O	Transmit
4	CTS	I	Clear send
5	RTS	O	Request to send
6	DTR	O	Data Terminal Ready
7	GND		GND
8			

(1) When the RS232 interface of the DVS connects with the DTE equipment, one end of the cable is the 8-pin RJ45 connector (to DVS) and the other of the cable is the DB25 female connector (to DTE). Below is the description of the internal connection between RJ45 and DB25.

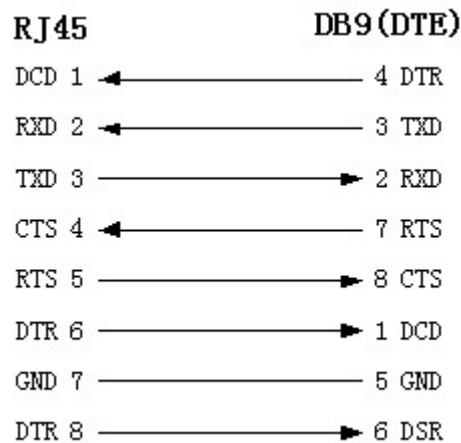


RJ45	DB25 (DTE)
DCD 1	← 20 DTR
RXD 2	← 2 TXD
TXD 3	→ 3 RXD
CTS 4	← 4 RTS
RTS 5	→ 5 CTS
DTR 6	→ 8 DCD
GND 7	→ 7 GND
DTR 8	→ 6 DSR

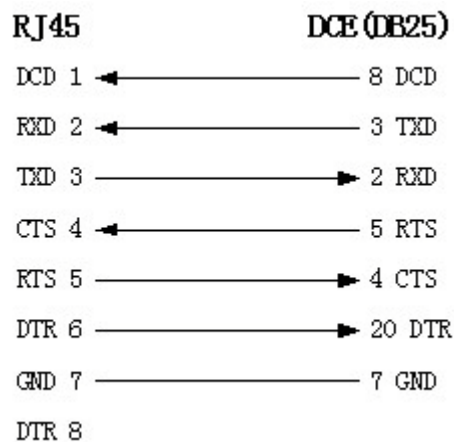
(2) 25-pin to 9-pin converter's internal connection is like this:



(3) If you don't want to use 25-pin to 9-pin convertor to connect DVS and DTE through RS232 interface, you must use RJ45-DB9 cable. Its internal connection description is:

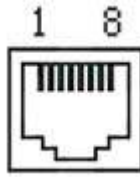


(4) When the RS232 interface of the DVS connects with the DCE (such as MODEM), one end of the cable is the 8-pin RJ45 connector and the other is the DB25 male connector. Below is the description of the internal connection between RJ45 and DB25:





### 2.3.2 PIN definition of RS485 port



Pin5 ---- TX+/RX+

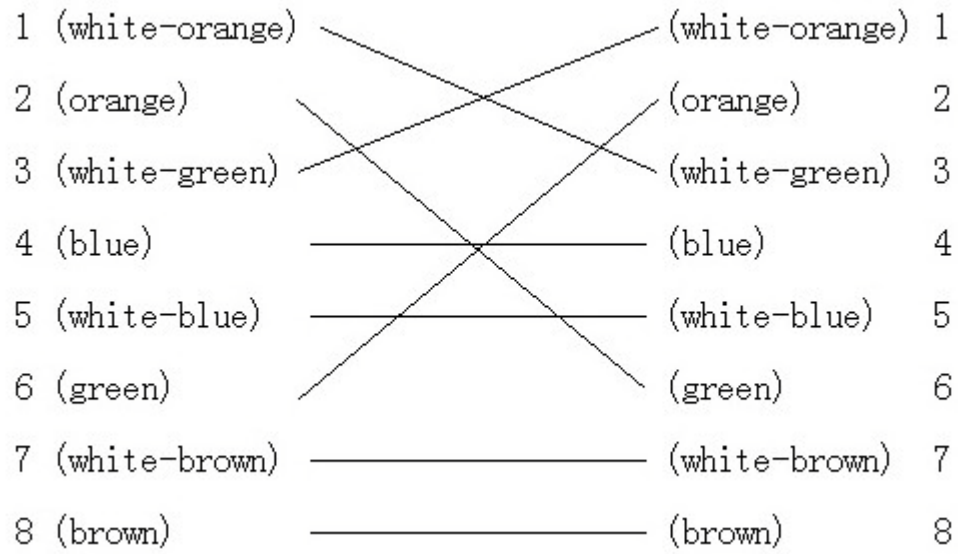
Pin 6 ----- TX-/RX-

### 2.3.3 PIN definition of Ethernet port

(1) PIN definition of the direct network cable connecting Decoder and network HUB or switch:

1 (white-orange)	—————	(white-orange)	1
2 (Orange)	—————	(Orange)	2
3 (white-green)	—————	(white-green)	3
4 (blue)	—————	(blue)	4
5 (white-blue)	—————	(white-blue)	5
6 (green)	—————	(green)	6
7 (white-brown)	—————	(white-brown)	7
8 (brown)	—————	(brown)	8

(2) PIN definition of the cross network cable connecting Decoder and host PC:



## Chapter 3 Video Server Setup

There are three kinds of methods to configure the parameters of video server.

1. Through Hyper Terminal (connect Decoder with the PC through RS-232 serial ports)
2. Through client-end application software (connect Decoder with PC through network)

### 3.1 Parameter Setup through RS-232 serial port

Mainly set up IP parameters of the video server through serial port. The defaulted IP address is 192.0.0.62.

Under the case that the IP address is unknown; the Hyper Terminal (need to connect the serial ports) can only be adopted to configure IP address and other parameters. Under the case that IP address is known, TELNET can be adopted to configure IP address and other parameters, and can also modify the IP address by using client-end software.

#### 3.1.1 Hyper Terminal Setup

Please direct connect the RS-232 serial port of PC with the RS-232 serial port of video server before configuration (there are RJ45 head and DB9 line in the packing carton)

##### How to establish the connection with the super terminal connection?

**Step one:** Enter into Hyper Terminal. Click “Start” → “Programs” → “Accessories” → “Communications” → “Hyper Terminal” in Windows system, and the dialogue box below will appear (Fig. 3.1.1):

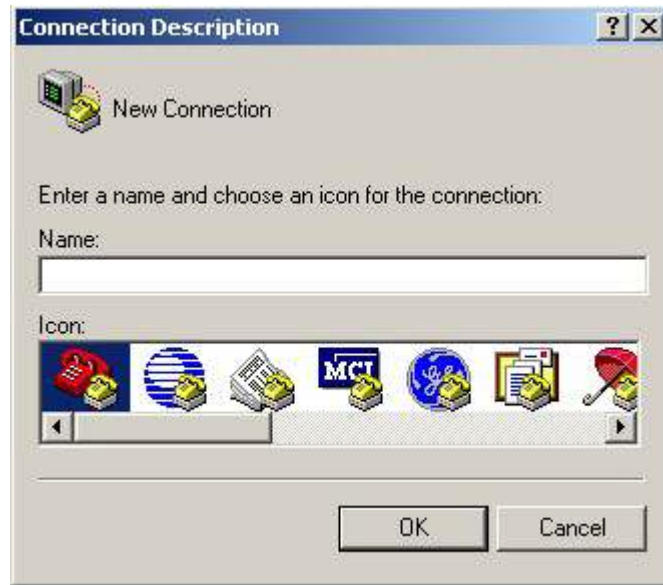


Fig. 3.1.1 newly establish a connection and define the name and icon

**Step2:** To name the connection name and to define the icon. Input a name (e.g. aa), select a icon, press “OK”, the dialogue box like Fig. 3.1.2 appears.



Fig. 3.1.2 select communication port

**Step 3’:** to select the communication port. Select “com1” communication port in Fig3.1.2, press “OK”, the dialogue box as Fig. 3.1.3 will appear.

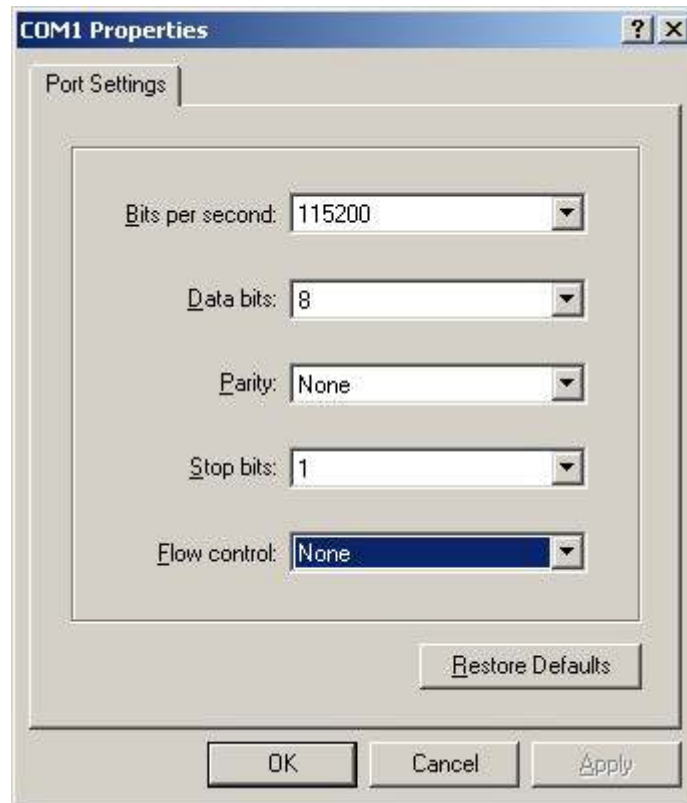


Fig. 3.1.3 Serial ports parameter setup

**Step 4:** Serial port parameters setup. Set the serial port parameters as the following setup: Bits per second: 115200, Data bits: 8, Parity: None, Stop bits: 1, Flow control: None. Press “OK” after finish, the Hyper Terminal interface like Fig. 3.1.4 will appear

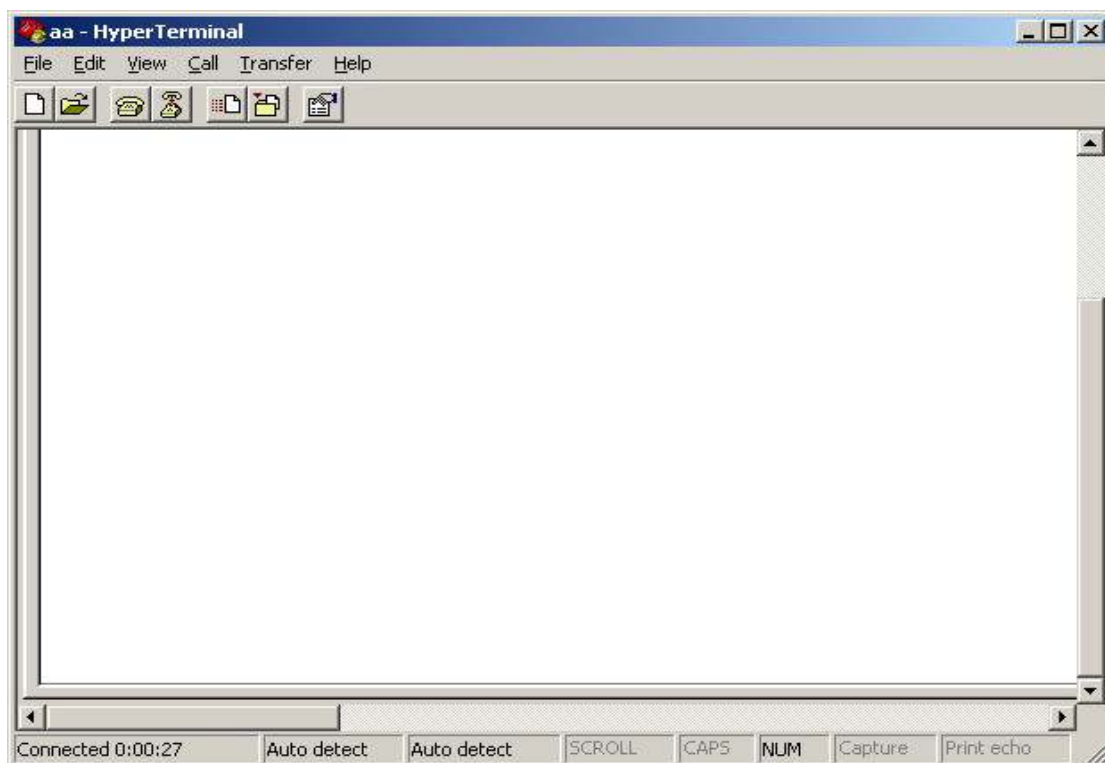


Fig. 3.1.4 Hyper Terminal Interface

**Step 5:** To close the window, the Fig. 3.1.5 will appear. Select “Yes” and Fig. 3.1.5 will appear. Select “Yes” again to have the Fig. 3.1.6



Fig. 3.1.5 to disconnect



Fig. 3.1.6 save Hyper Terminal session

**Step 6:** Save the Hyper Terminal session for using next time. After saving, it will new establish a “Hyper Terminal” item in the program group “Start” → “Programs” → “Accessories” → “Communications” → “Hyper Terminal” and it includes all “Connection” name for all Hyper Terminal. Here you have see a “aa.ht”.

### 3.1.2 Shell Commands under Hyper Terminal

Please use the DTE cable and the DB9/DB25 convertor to connect PC with DVS RS-232 port.

**Step 1:** Enter into the Hyper Terminal. Click “ Start” → “Programs” → “Accessories” → “Communications” → “Hyper Terminal” → “aa.ht”, the Hyper Terminal interface in Fig, 3.1.4 will appear.

**Step 2:** Press “Enter” in Hyper Terminal, the prompt “—>” appear, as in Fig. 3.1.7. Under this prompt the following operation commands to accomplish the setup of the parameters.

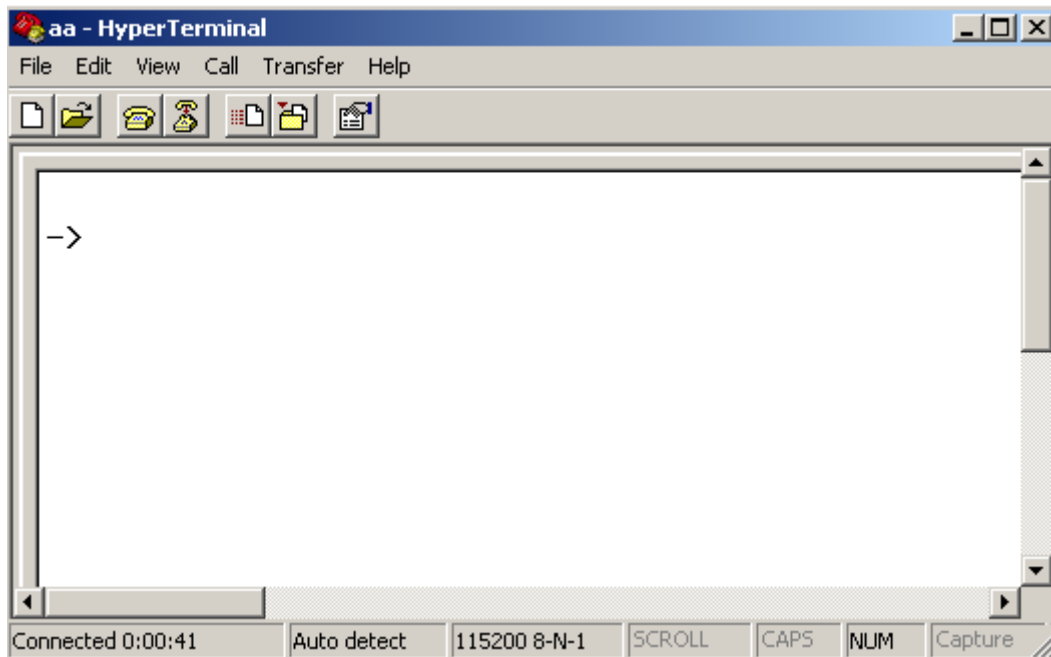


Fig. 3.1.7 Hyper Terminal command prompt

Input help, the supported configuration commands can be checked up, as in Fig. 3.1.8.

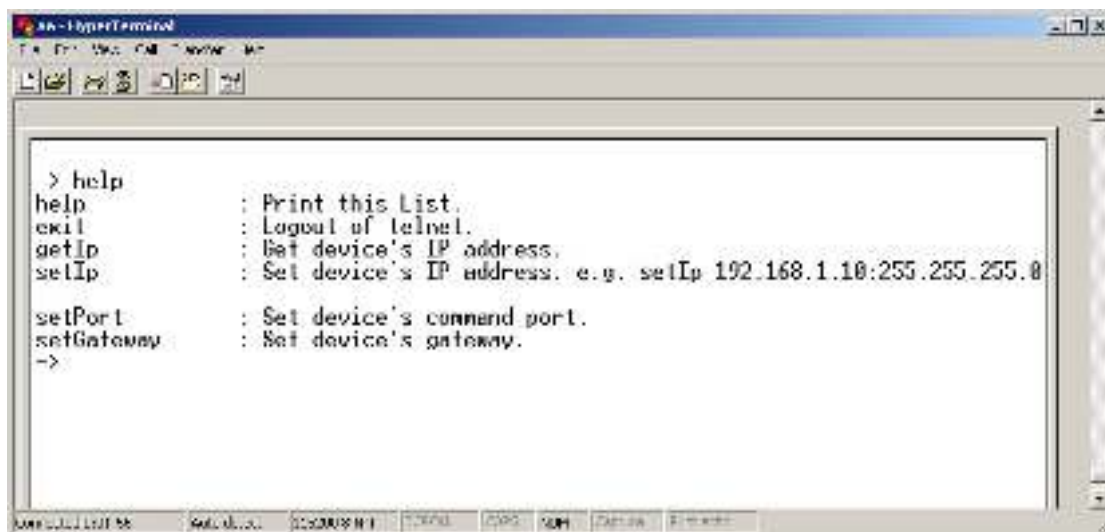


Fig. 3.1.8 to check command

The following is the introduction of getIp, setIp commands.

### getIp

Function: to get the fixed IP, subnet mask, gateway, command port, IP address of PPPoE dialup (the IP address of PPPoE will be 0.0.0.0 if there is no dialup or dialup is not successful).

Parameter: none.

Grammar format: Enter after input the command

Explanation: Please pay attention whether the inputting letters are capital or low case.

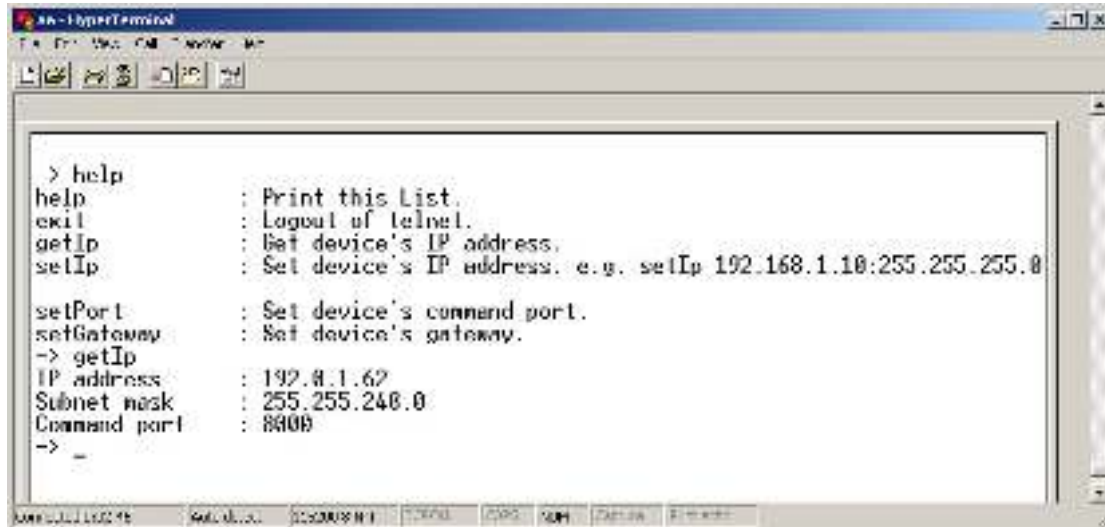


Fig. 3.1.9 to get parameters of IP, PPPoE

### setIp

Function: to set the IP, subnet mask and gateway of the device

Parameter: IP address, subnet mask, gateway

Grammar format: setIp IP: mask

Explanation: Please pay attention whether the inputting letters are capital or low case. And separate the parameters by colons.

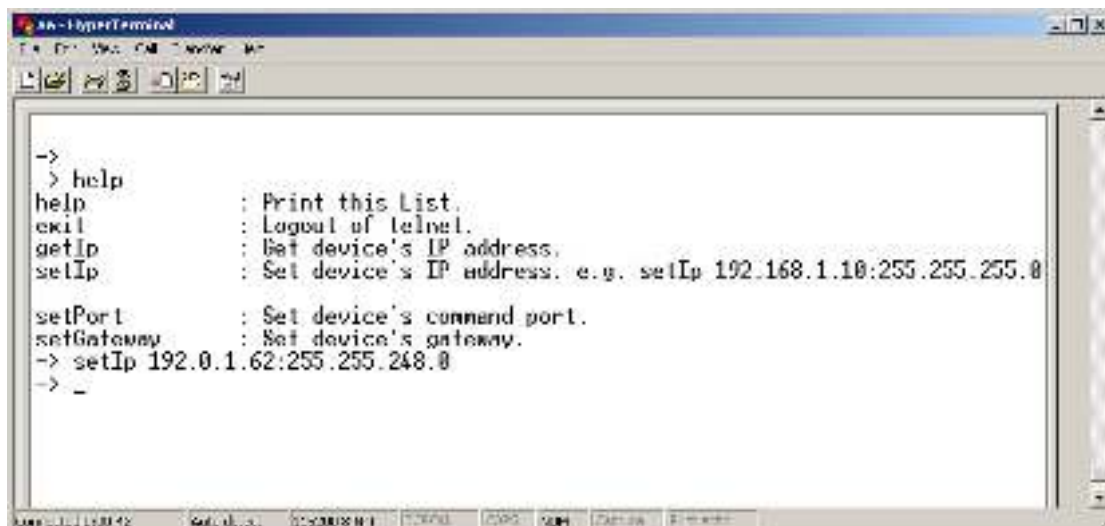


Fig. 3.1.10 to set IP



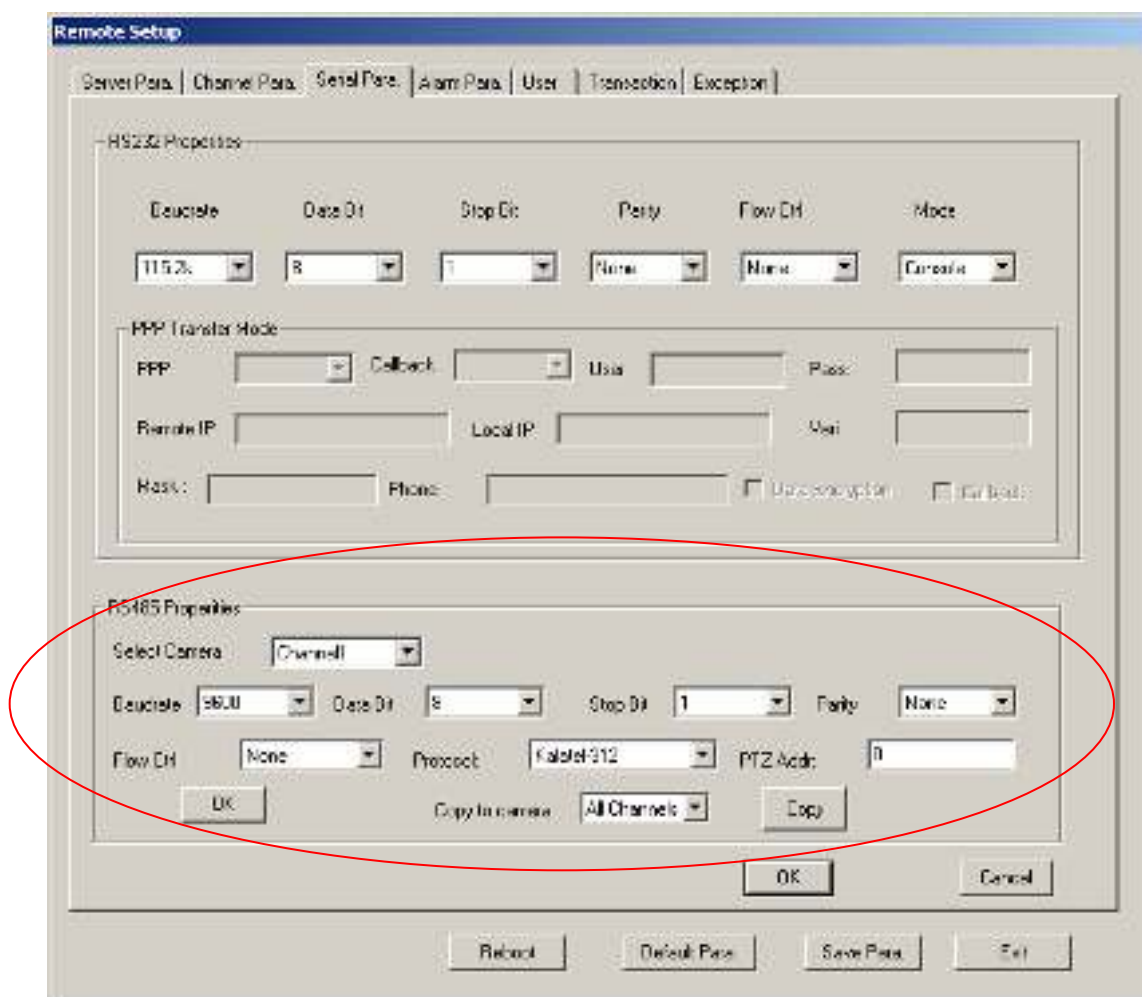
## 3.2PTZ control

Step1: Connect Decoder RS-485 interface with PTZ. Please refer to RS-485 pin definition.

DVS just uses Pin5 (TX+) and Pin6 (TX-) to send PTZ control command.

Step2: You can use remote client software to setup PTZ protocol.

In client software remote setup dialog box, select “Serial Para” tab button. You can select DVS PTZ parameters in the corresponding dialog box.



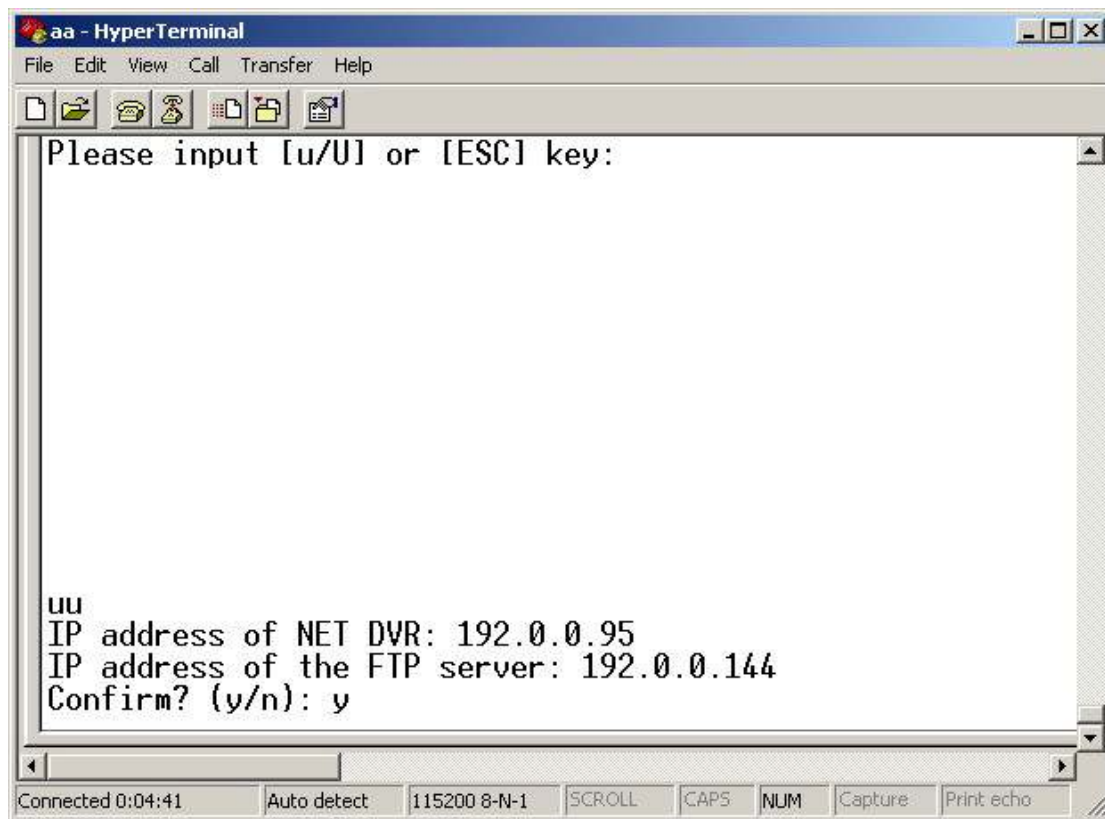
Please refer to client software user manual for detail information.

## Chapter 4 Upgrade Firmware

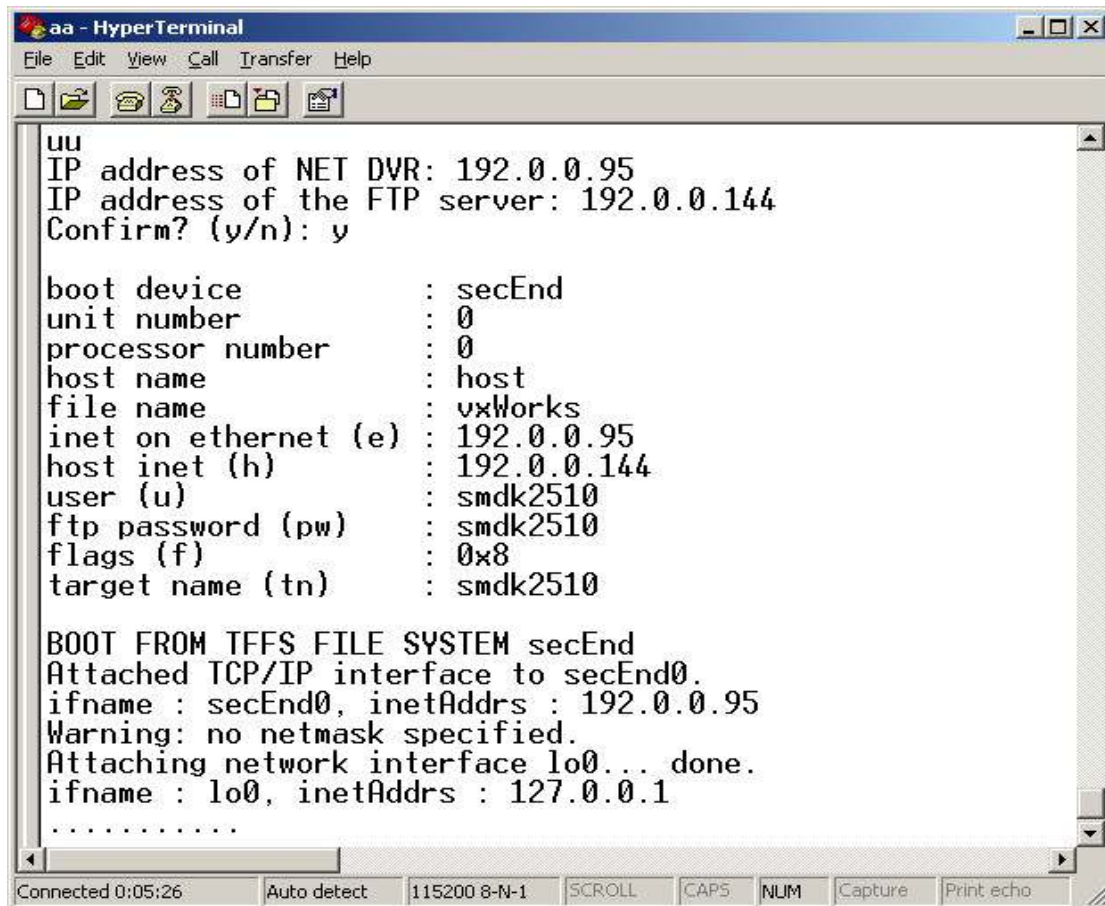
There are two methods to upgrade the Decoder firmware. One is using shell commands to ask Decoder to download firmware from FTP server. The other is using PC client software.

### 4.1 Use Shell Command and FTP Server

1. Using DTE cable to connect the RS232 of Decoder with the RS232 of PC.
2. Setup the Hyper Terminal correctly and run it.
3. Make sure the FTP Server (wftpd32.exe) is setup correctly (the corresponding user manual is in CD) and run it.
4. Make sure the network between Decoder and PC is ok.
5. Press "ctrl" and "u" keys of the PC keyboard, do not release them.
6. Switch off and on the power supply of decoder.
7. In the HyperTerminal, the following sentence is appeared:  
Please input [u/U] or [ESC] key
8. Release "ctrl" and "u" keys, press "u" key
9. After that, please refer to following pictures.



In the example, I set the Decoder as "192.0.0.95" and ftp server as "192.0.0.144". Of course the ftp server software (wftpd32.exe) is run in the PC whose IP address is "192.0.0.144" and the network is OK. In this case, Decoder (192.0.0.95) will search the PC (192.0.0.144) and download the firmware from ftp server.



aa - HyperTerminal

File Edit View Call Transfer Help

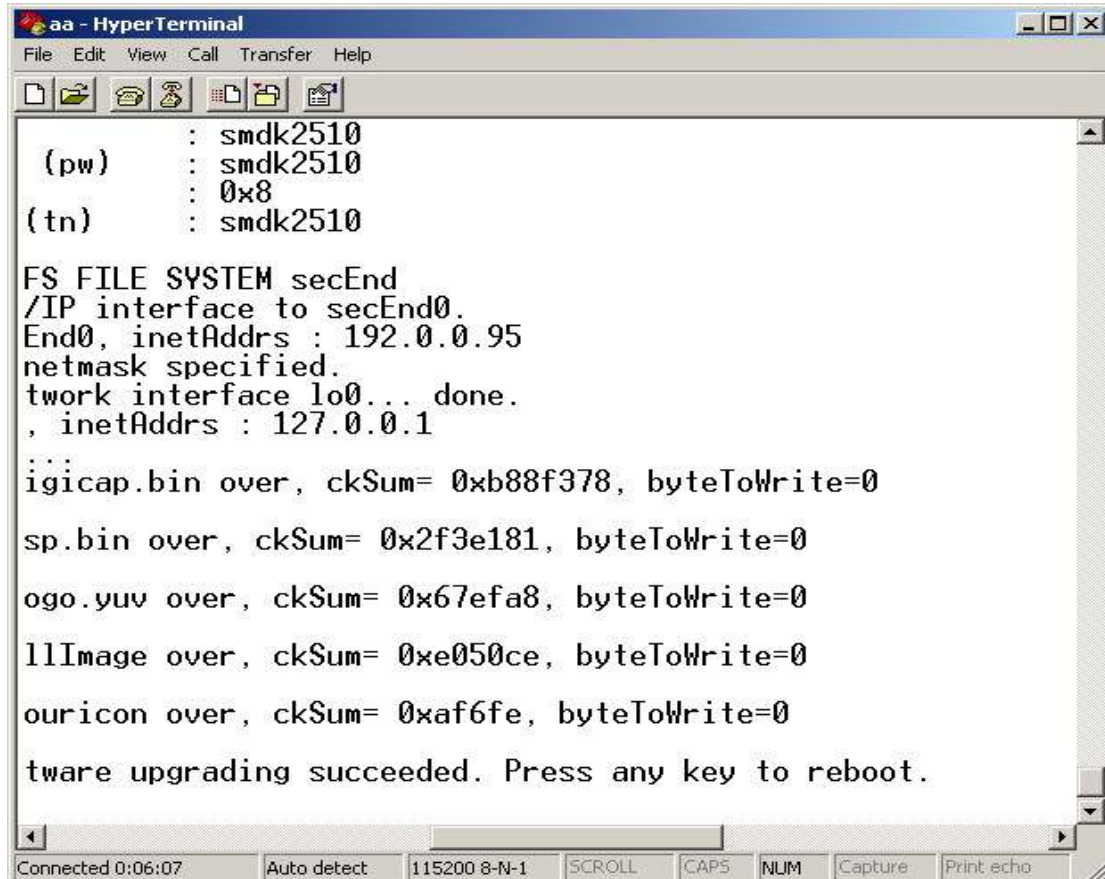
UU  
 IP address of NET DVR: 192.0.0.95  
 IP address of the FTP server: 192.0.0.144  
 Confirm? (y/n): y

```

boot device      : secEnd
unit number     : 0
processor number : 0
host name       : host
file name       : vxWorks
inet on ethernet (e) : 192.0.0.95
host inet (h)   : 192.0.0.144
user (u)        : smdk2510
ftp password (pw) : smdk2510
flags (f)       : 0x8
target name (tn) : smdk2510
  
```

BOOT FROM TFFS FILE SYSTEM secEnd  
 Attached TCP/IP interface to secEnd0.  
 ifname : secEnd0, inetAddr: 192.0.0.95  
 Warning: no netmask specified.  
 Attaching network interface lo0... done.  
 ifname : lo0, inetAddr: 127.0.0.1  
 .....

Connected 0:05:26   Auto detect   115200 8-N-1   SCROLL   CAPS   NUM   Capture   Print echo



aa - HyperTerminal

File Edit View Call Transfer Help

```

      : smdk2510
(pw)  : smdk2510
      : 0x8
(tn)  : smdk2510
  
```

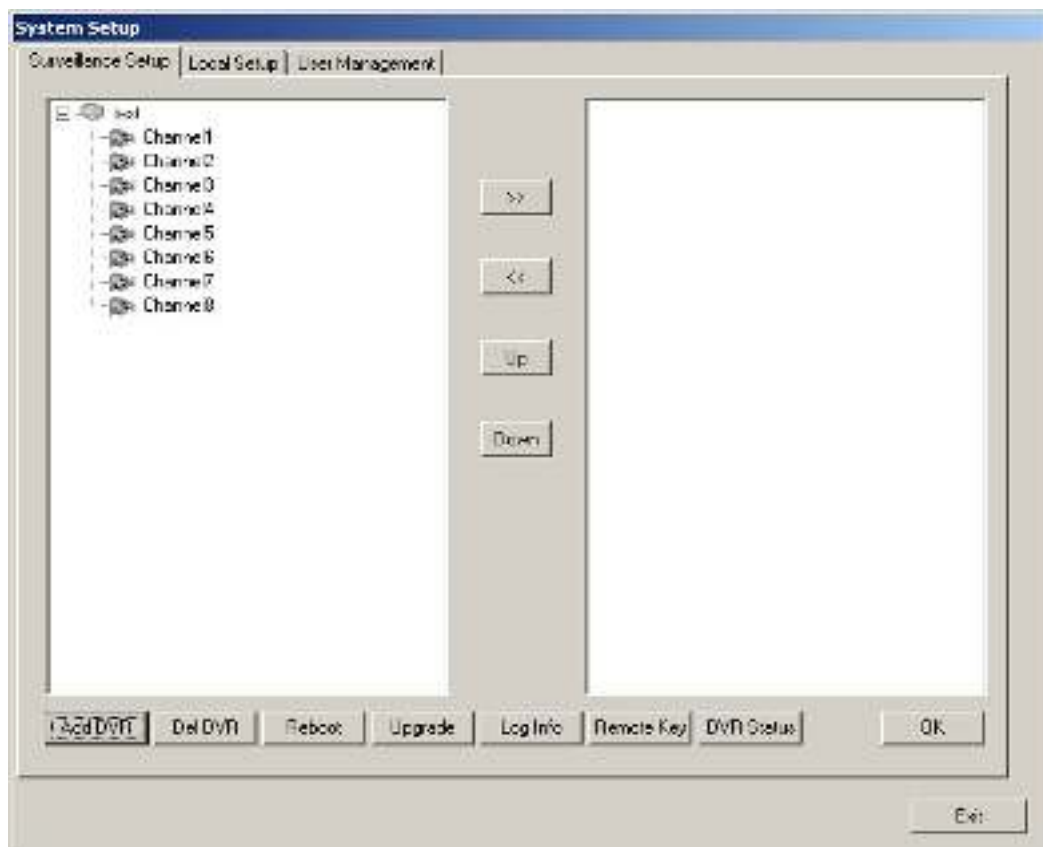
FS FILE SYSTEM secEnd  
 /IP interface to secEnd0.  
 End0, inetAddr: 192.0.0.95  
 netmask specified.  
 twork interface lo0... done.  
 , inetAddr: 127.0.0.1

igicap.bin over, ckSum= 0xb88f378, byteToWrite=0  
 sp.bin over, ckSum= 0x2f3e181, byteToWrite=0  
 ogo.yuv over, ckSum= 0x67efa8, byteToWrite=0  
 llImage over, ckSum= 0xe050ce, byteToWrite=0  
 ouricon over, ckSum= 0xaf6fe, byteToWrite=0  
 tware upgrading succeeded. Press any key to reboot.

Connected 0:06:07   Auto detect   115200 8-N-1   SCROLL   CAPS   NUM   Capture   Print echo

## 4.2 Use Client Software to upgrade firmware

In the system setup dialog of DVRDVS client software (refer to client software user manual), there is a button named “Upgrade”:



Select the DVRDVS, Click “Upgrade” button, the following dialog box will be appeared:

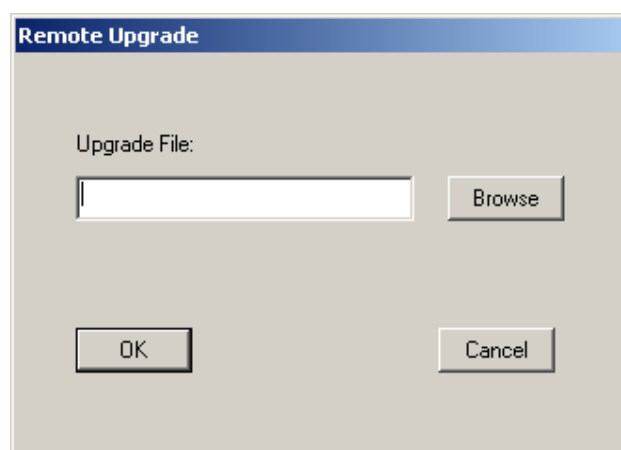


Fig.4.21 remote upgrading

Click “Browse” button and select the firmware file. Then click “Upgrade” button, to complete the upgrading process of the video server firmware.

## Chapter 5 Frequent ask questions

### 1, Failure to control PTZ

It is possible that the camera and equipment are not connected through RS485 port, or the wrong configuration of the decoder.

### 2,certain individual channel picture is un-normal

Please check whether the video cable is well connected with the camera and the Embedded DVS

### 3,Possible reasons which can cause the failure of upgrading

Failure of the network, IP address error in the FTP host computer, FTP service is not been booted by PC, the path to upgrade is incorrect; no permission (usually happened when to upgrade through client-end.)

If the above information cannot meet your demand, please not hesitate to contact the provider.

## Appendix A DS-6001FI Specifications

<b>Model</b>	DS-6001FI Encoder & Decoder
<b>Video standard</b>	H.264
<b>Compression resolution</b>	4CIF/DCIF/2CIF/CIF/QCIF
<b>Video input</b>	1 channel BNC (1.0Vp-p, 75Ω)
<b>Video output</b>	1 channel BNC (1.0Vp-p, 75Ω)
<b>Frame rate (per channel)</b>	4CIF: 25(P)/30(N) fps
<b>Stream type</b>	Video
<b>Bit rate</b>	32kbps~2Mbps, user-defined
<b>Voice interface</b>	1 RCA linear input, 600Ω
<b>Audio output</b>	1 RCA output
<b>Communication interface</b>	1 RJ45 10M/100M UTP network port 1 RJ45 RS-232 port 1 RJ45 RS-485 port 1 RJ45 for alarm input and output
<b>External alarm input</b>	2
<b>Relay output</b>	2
<b>Power supply</b>	DC +12V
<b>Power consumption</b>	≤20W
<b>Working temperature</b>	-10℃~+55℃
<b>Working humidity</b>	10%~90%
<b>Size</b>	199mm*122mm*42mm
<b>Weight</b>	<2Kg

## **Appendix B Good List**

1. One piece of DS-6001FI decoding server;
2. A CD contains client application;
3. One power supply voltage stabilizer
4. A 220V power cable;
5. A cable connecting RS232 with DTE;
6. A DTE cable



## Appendix C Customer Information Card

<b>User's Name</b>	<b>Mr./Mrs.</b>
<b>Company Name</b>	
<b>Post Address</b>	
<b>Postcode</b>	
<b>Phone Number</b>	
<b>E-mail</b>	
<b>Model Number of Product</b>	
<b>Serial Number of Product</b>	
<b>Purchase Date</b>	
<b>Distributor</b>	

**Suggestions:**