



PATENT OFFICE 

 **TWIN DRIVE - MANUAL**

TRACKLESS BI-FOLDING  
SWING GATE HARDWARE  
SPACE-SAVING FEATURE

### TWIN DRIVE 6.0

BI-FOLDING DOUBLE LEAF  
SWING GATE HARDWARE  
SPACE-SAVING FEATURE  
MAX. 3.0 m SINGLE LEAF  
SINGLE LEAF MAX. 110 kg  
HEIGHT MAX. 1,6 m  
**CENTRAL HINGES INCLUDED**

CODE: 1710901

### TWIN DRIVE 3.0

BI-FOLDING SINGLE LEAF  
SWING GATE HARDWARE  
SPACE-SAVING FEATURE  
MAX. 3.0 m SINGLE LEAF  
SINGLE LEAF MAX. 110 kg  
HEIGHT MAX. 1,6 m  
**CENTRAL HINGES INCLUDED**

CODE: 1710902



NO WELDING  
REQUIRED



SPACE SAVING  
FEATURE  
- 50% OF BACK SPACE



EASY  
ASSEMBLY



FAST  
NO WELDING  
REQUIRED



EASY TELESCOPIC  
ADJUSTMENT



SUITABLE FOR  
OFFSET LEAFS  
100% + 50%



SUITABLE FOR  
ALL STANDARD HINGES  
WITH A SINGLE AXLE



WIND RESISTANCE  
MAX. 50%  
LEAF CLOSURE



SUITABLE FOR  
ALL STANDARD  
AUTOMATIC  
GATE OPERATORS



- 37°C  
TESTED & PROVEN



+ 50°C  
TESTED & PROVEN



TRACKLESS  
BI-FOLDING



COMPACT  
PACKAGE



EASY  
TRANSPORT



FOR RESIDENTIAL  
USE ONLY



TAKE  
AWAY



HIGH QUALITY  
GUARANTEED



CAIS  
INNOVATION



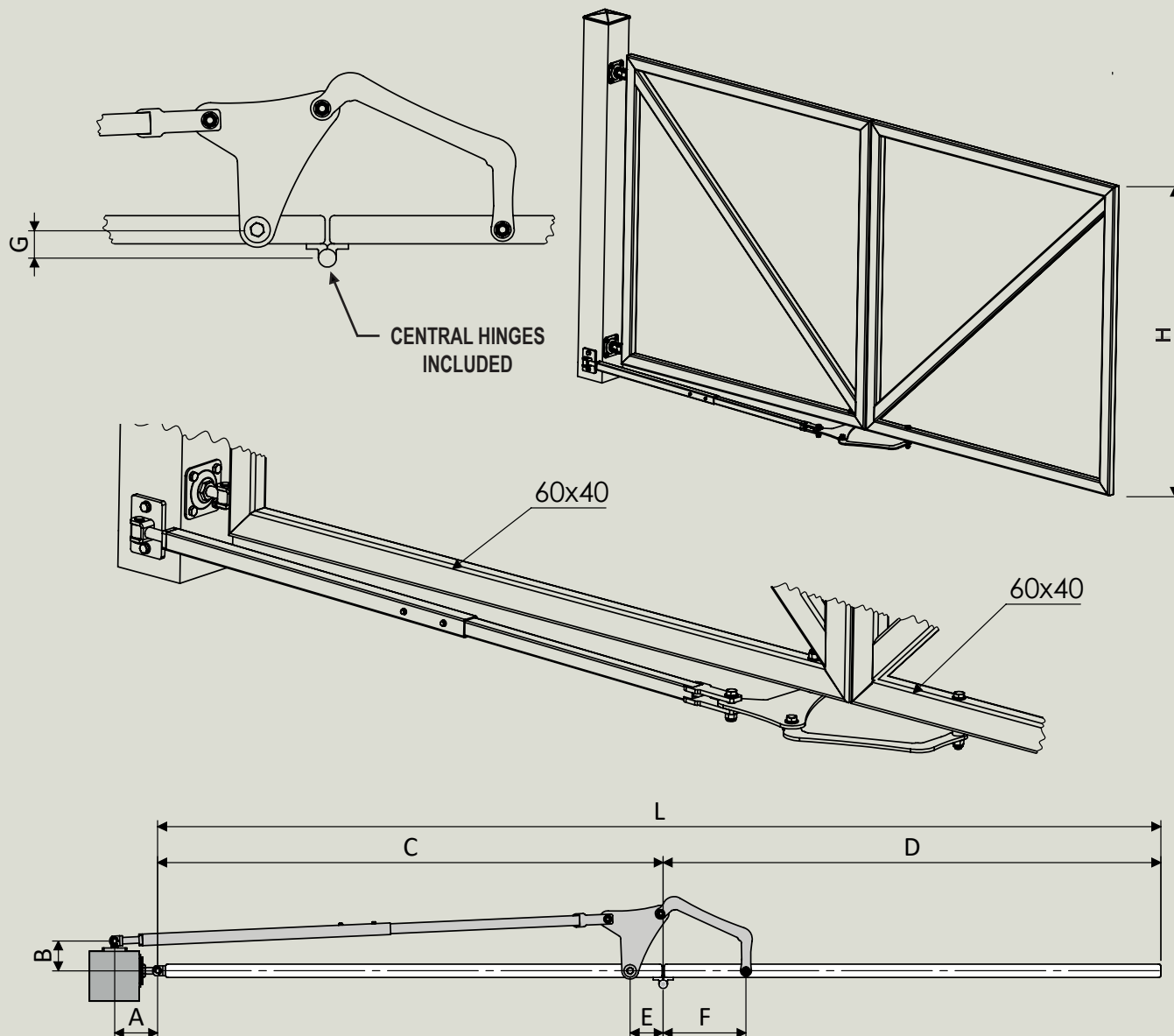
90° MAX. ANGLE

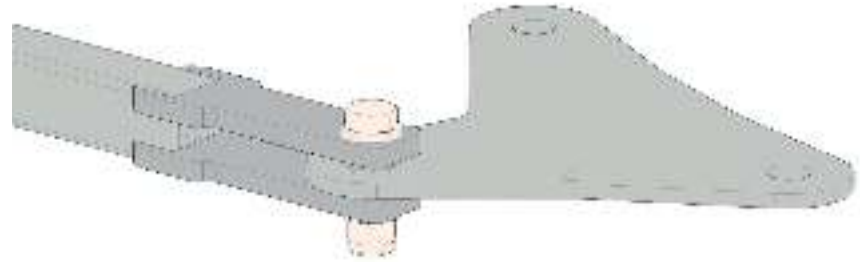
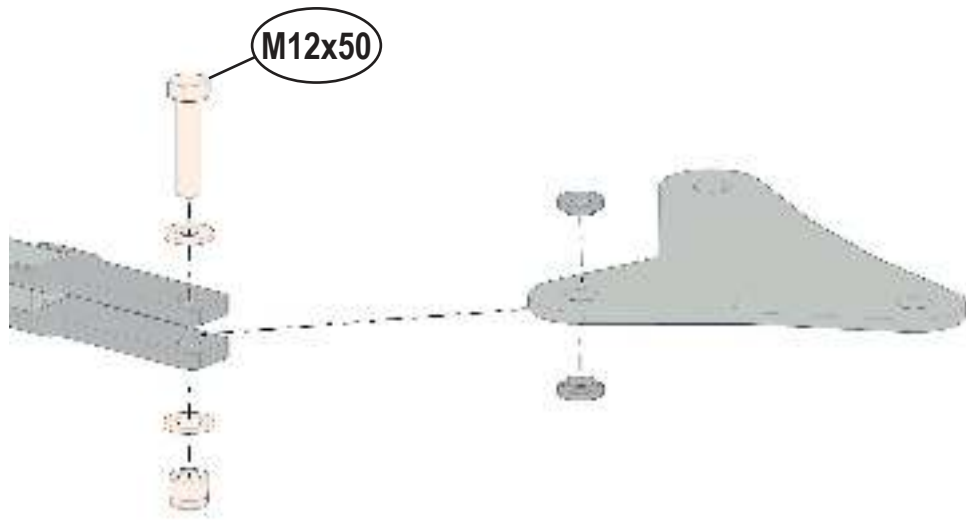


BOTTOM FIXED LEAF  
SAFETY FEATURE

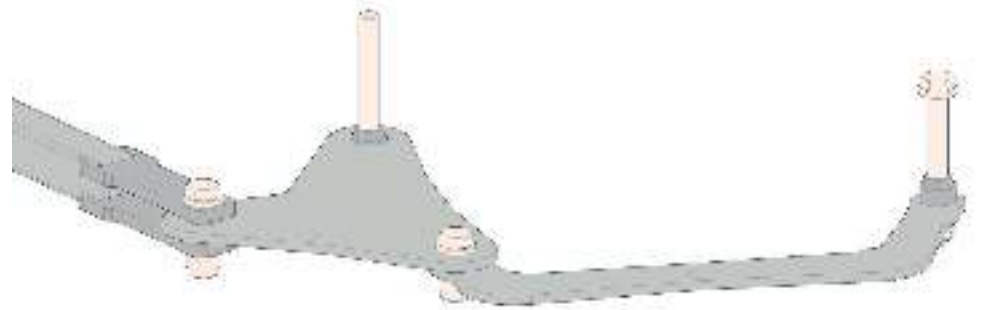
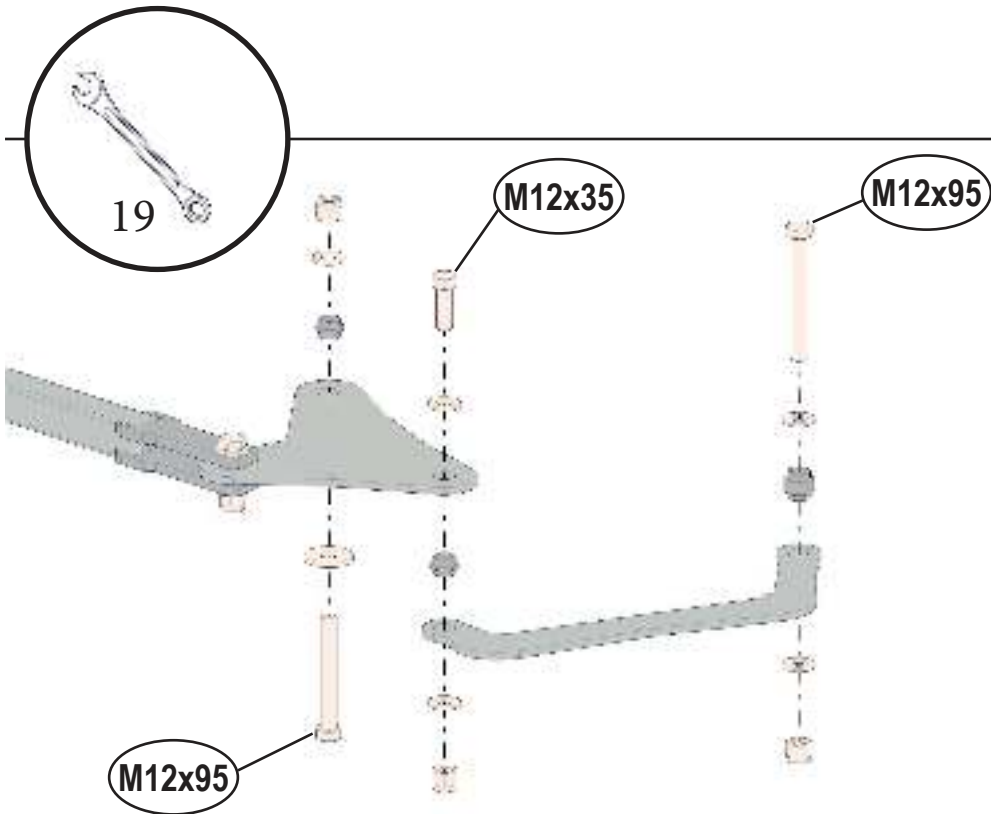
| L<br>max. | A   | B  | C<br>min. / max | D<br>min. / max. | E   | F   | G  | H    | SINGLE LEAF<br>max. |
|-----------|-----|----|-----------------|------------------|-----|-----|----|------|---------------------|
|           |     |    |                 | mm               |     |     |    |      | kg                  |
| 3000      | 130 | 90 | 1000- 1500      | 300 – 1500       | 100 | 250 | 40 | 1600 | 110                 |

Valid for gate frame 60x40



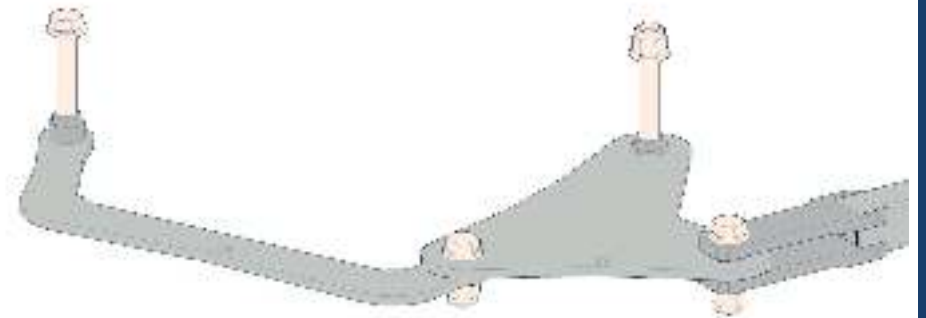
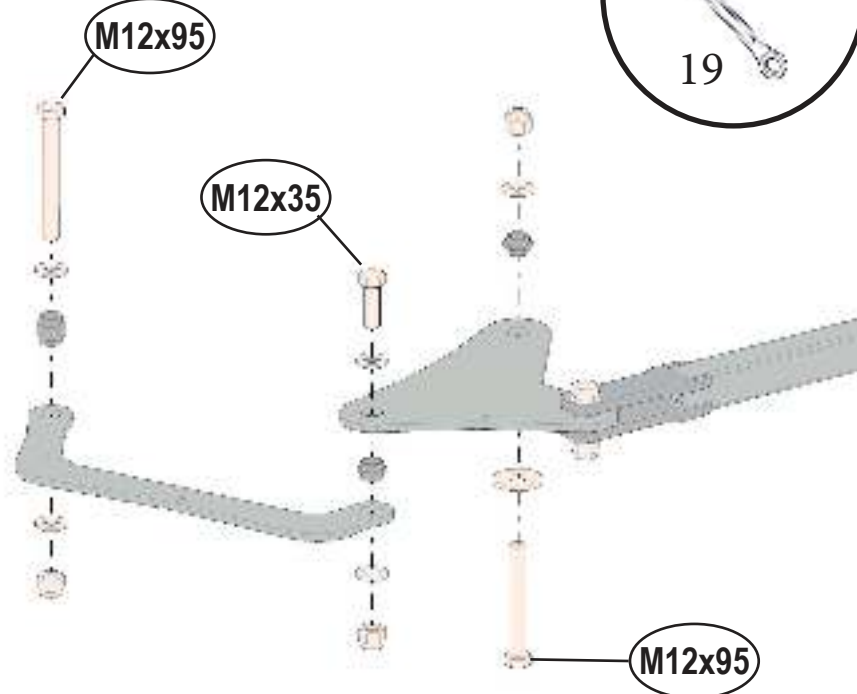
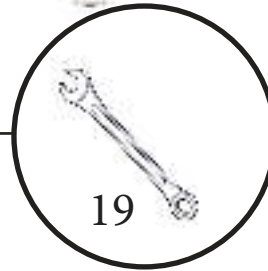
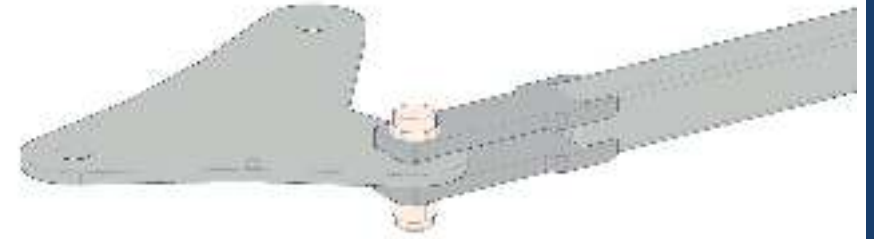
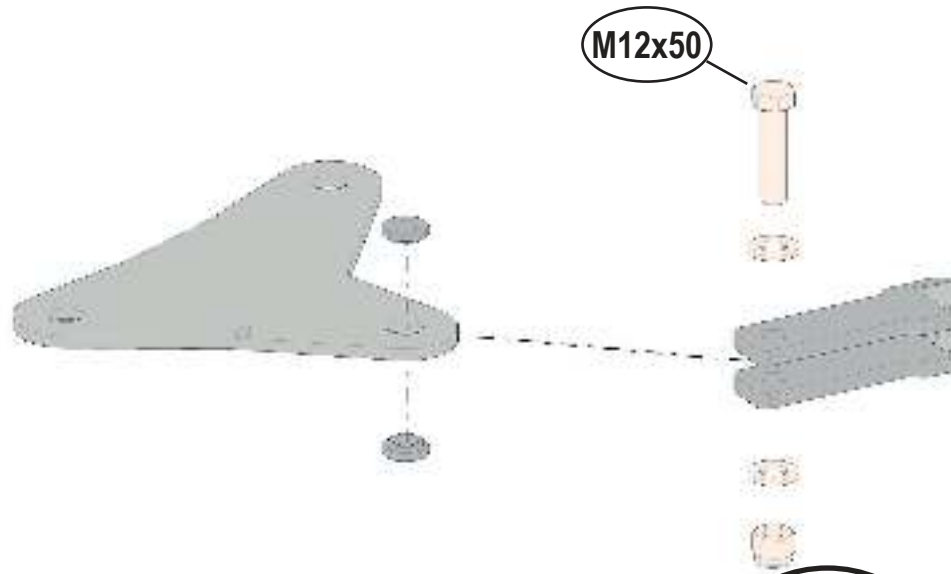


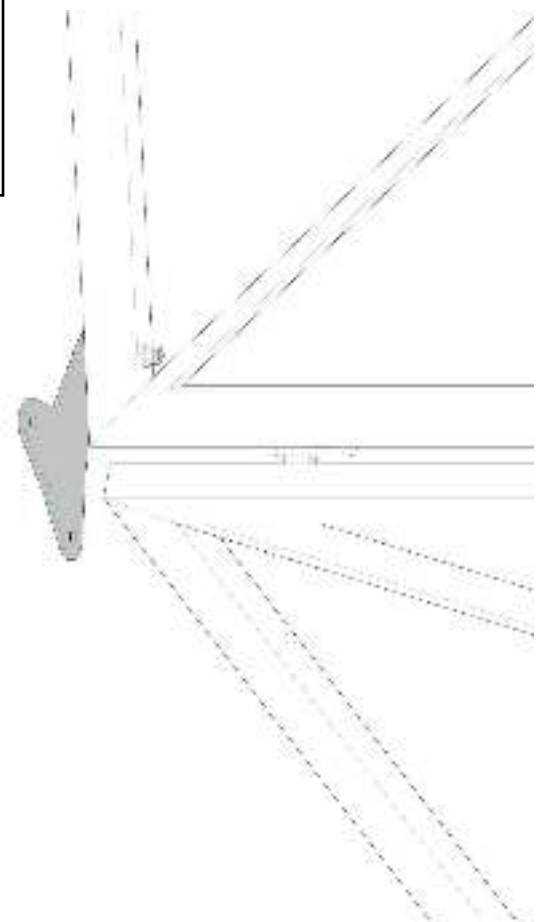
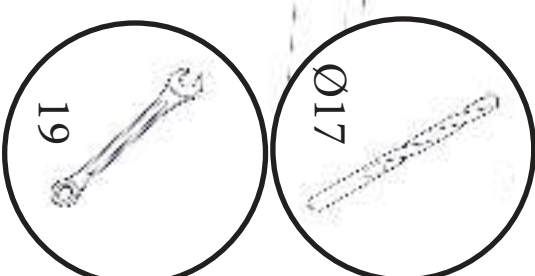
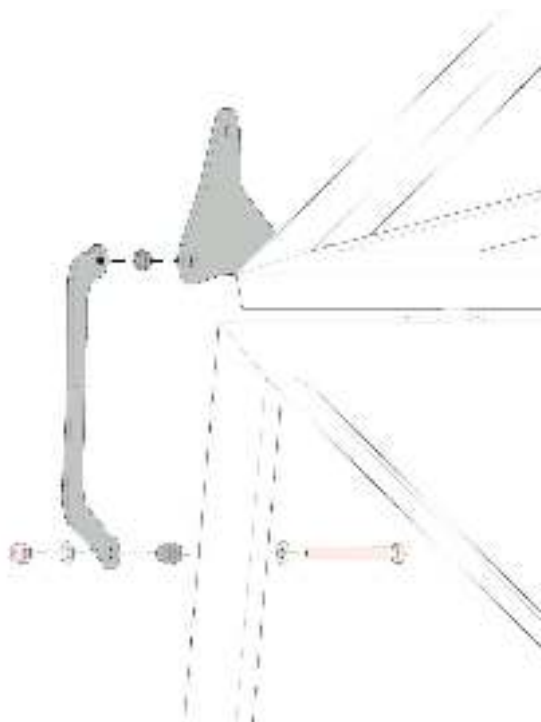
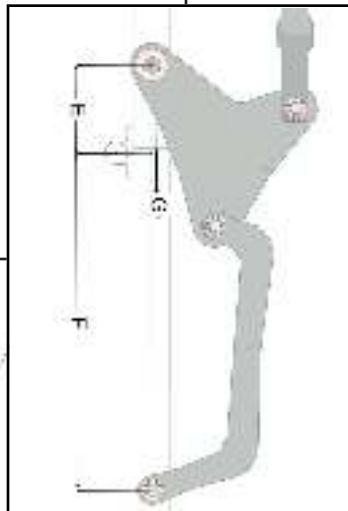
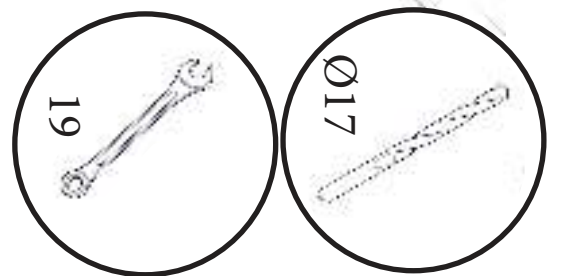
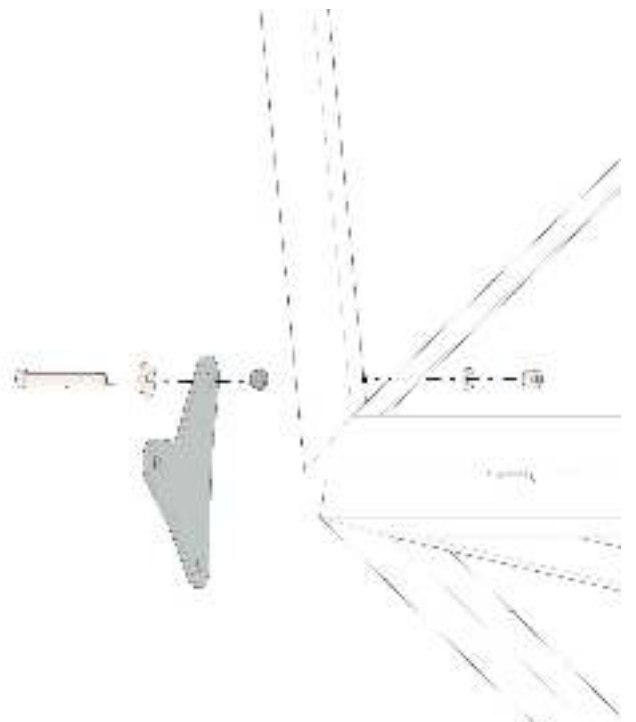
LEFT <<<



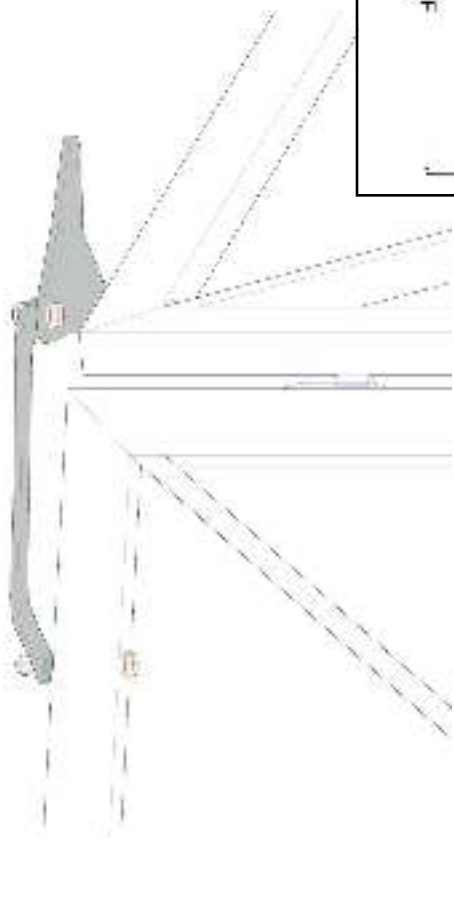
STEP 1 (A) - LEFT

RIGHT >>>

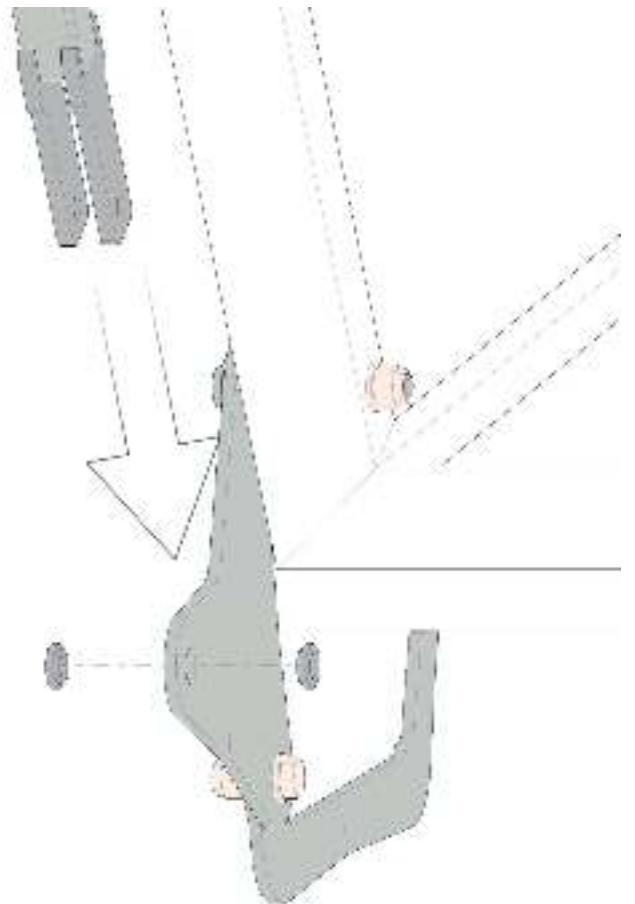
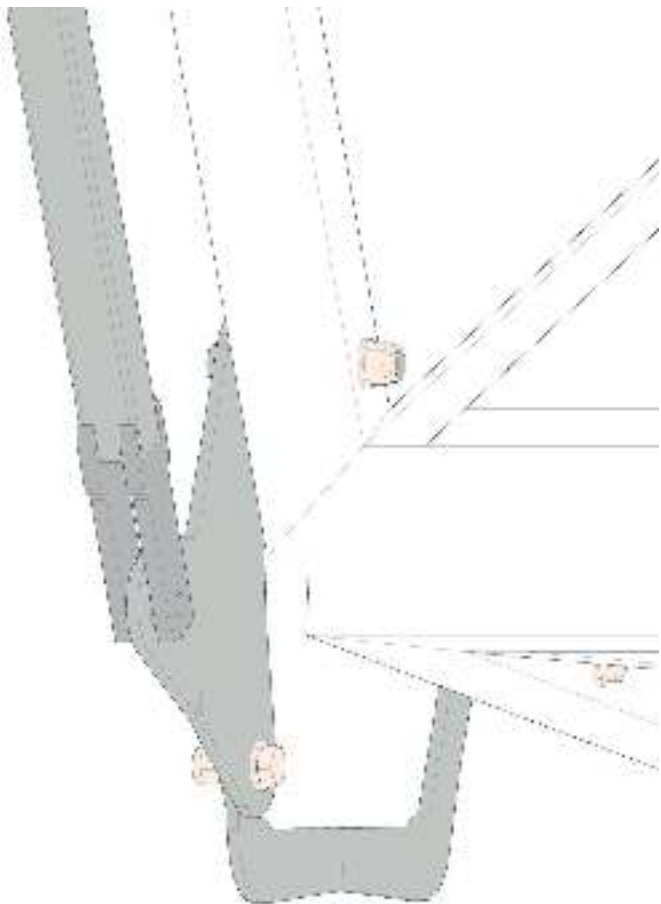
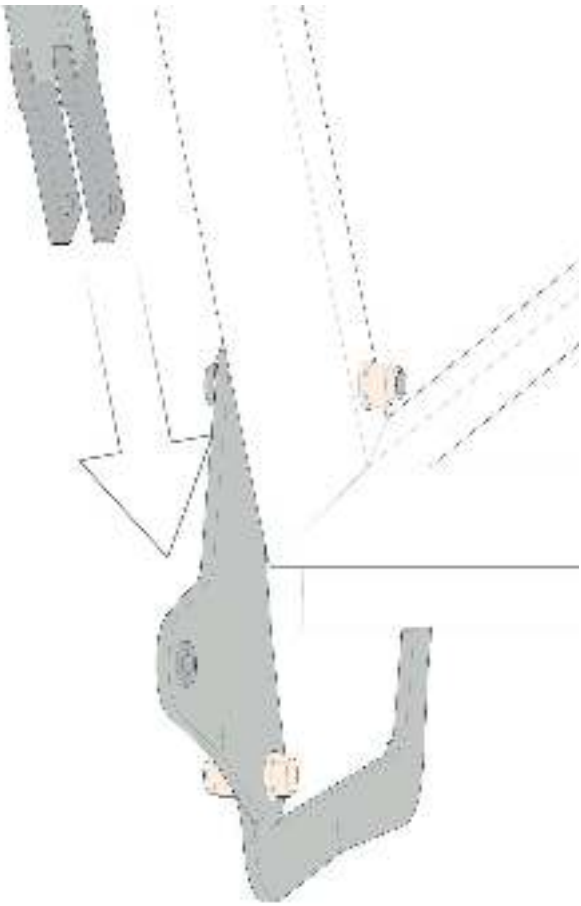


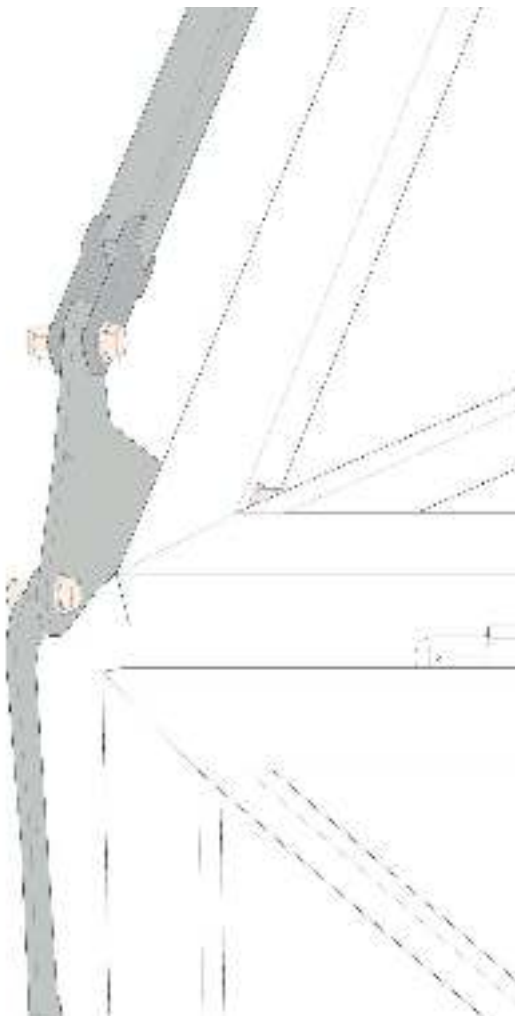
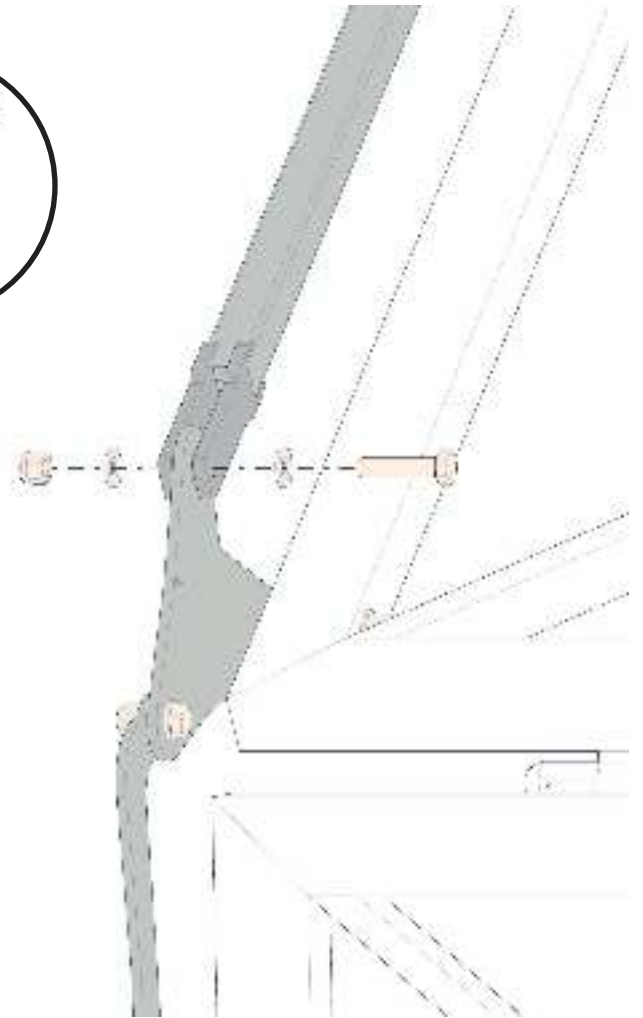
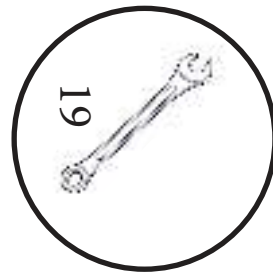


**STEP 2**



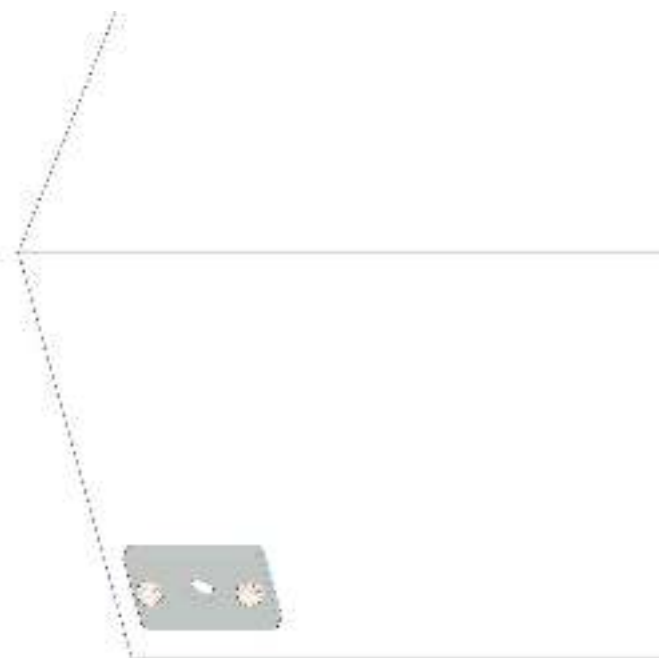
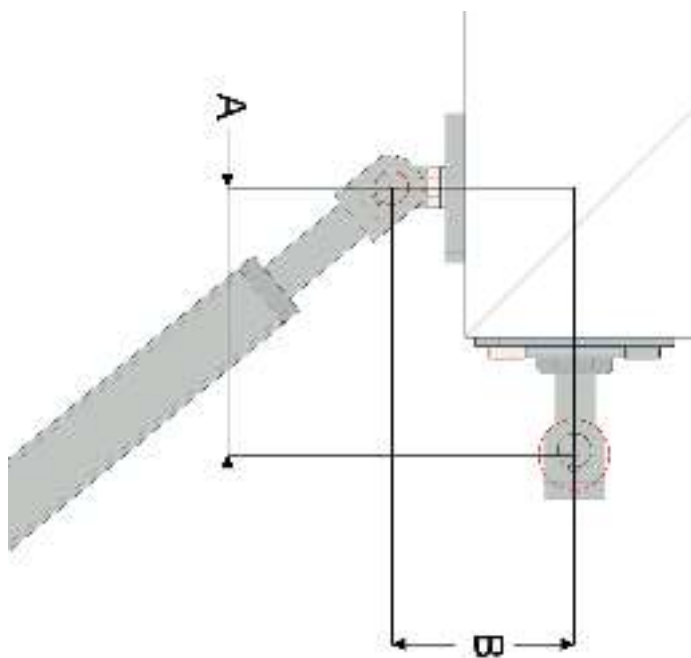
**STEP 3**



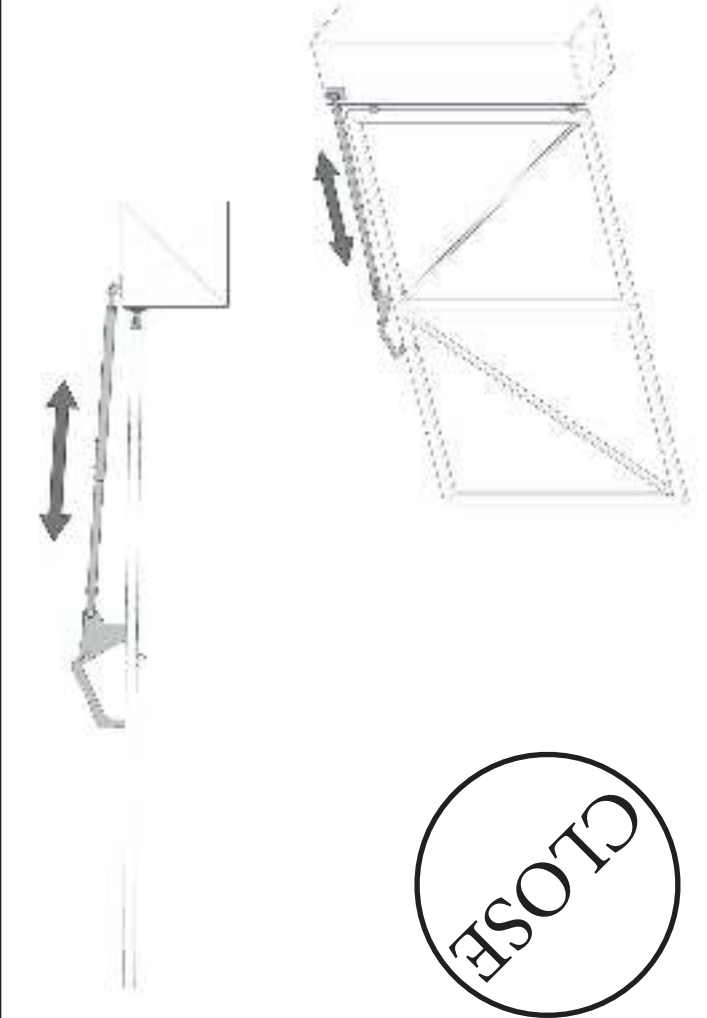
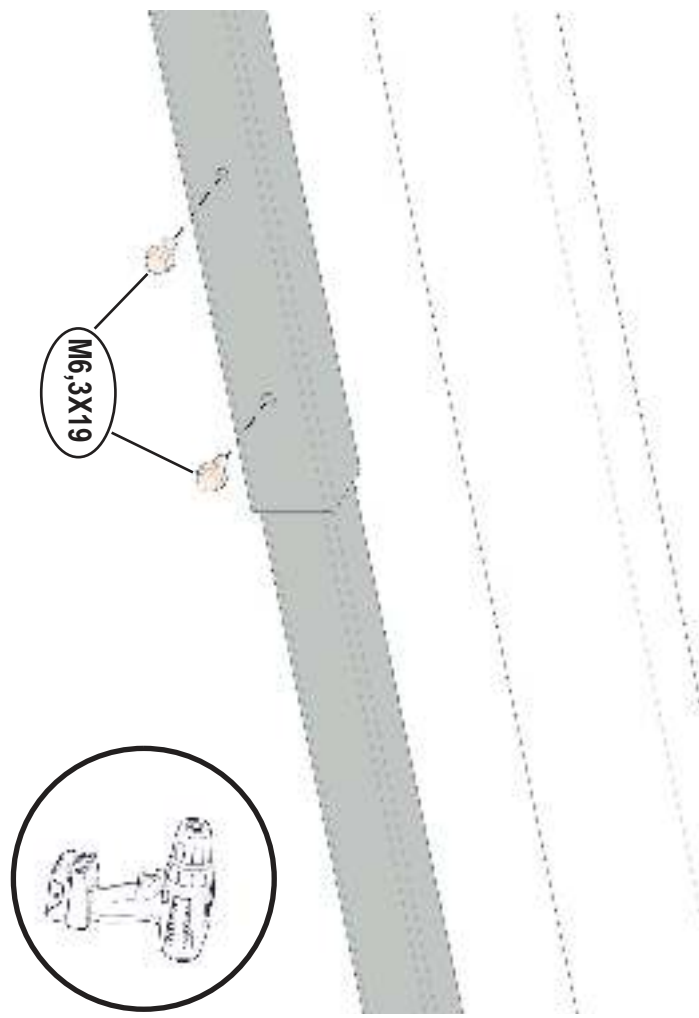


**STEP 5**



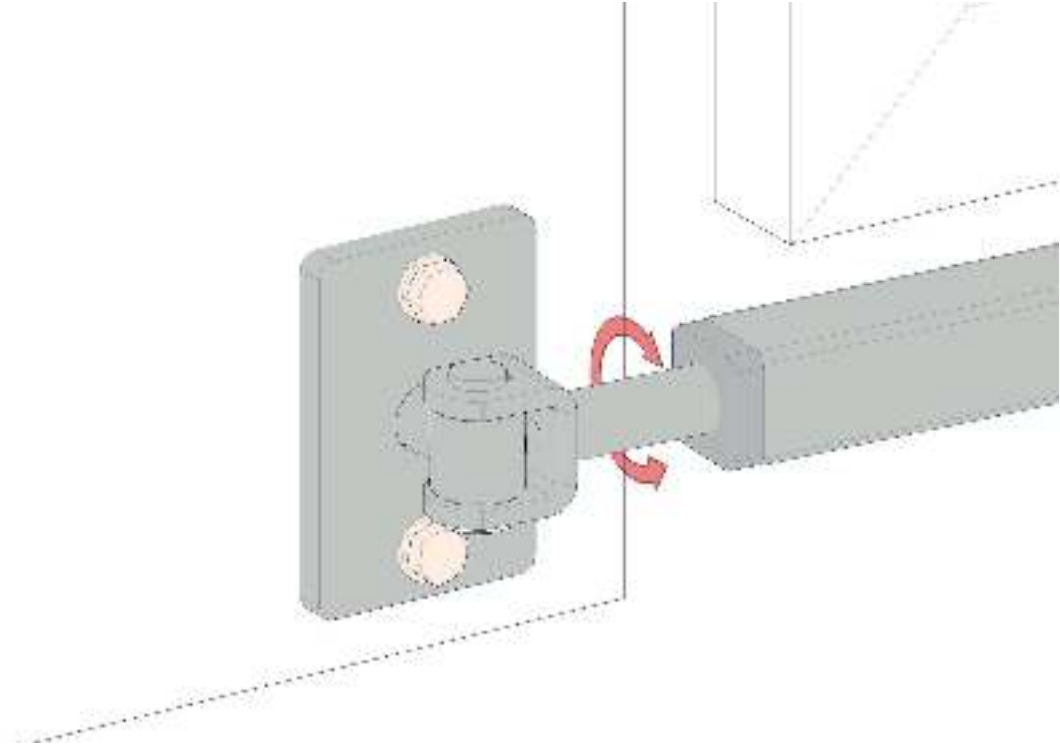
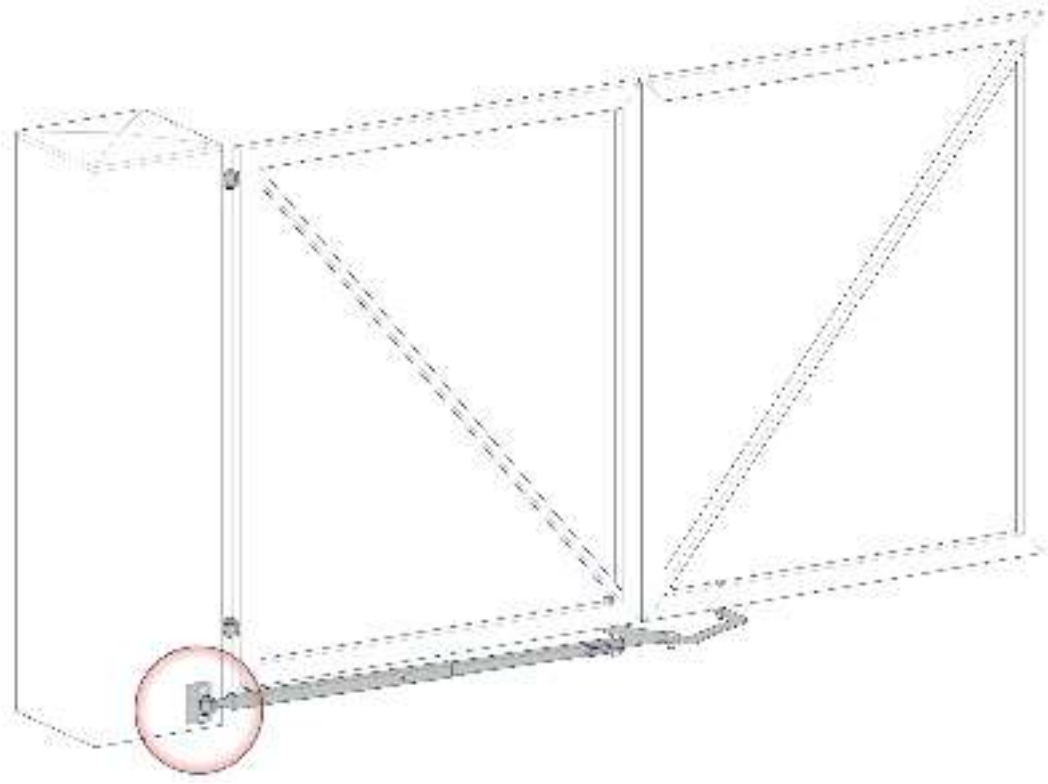


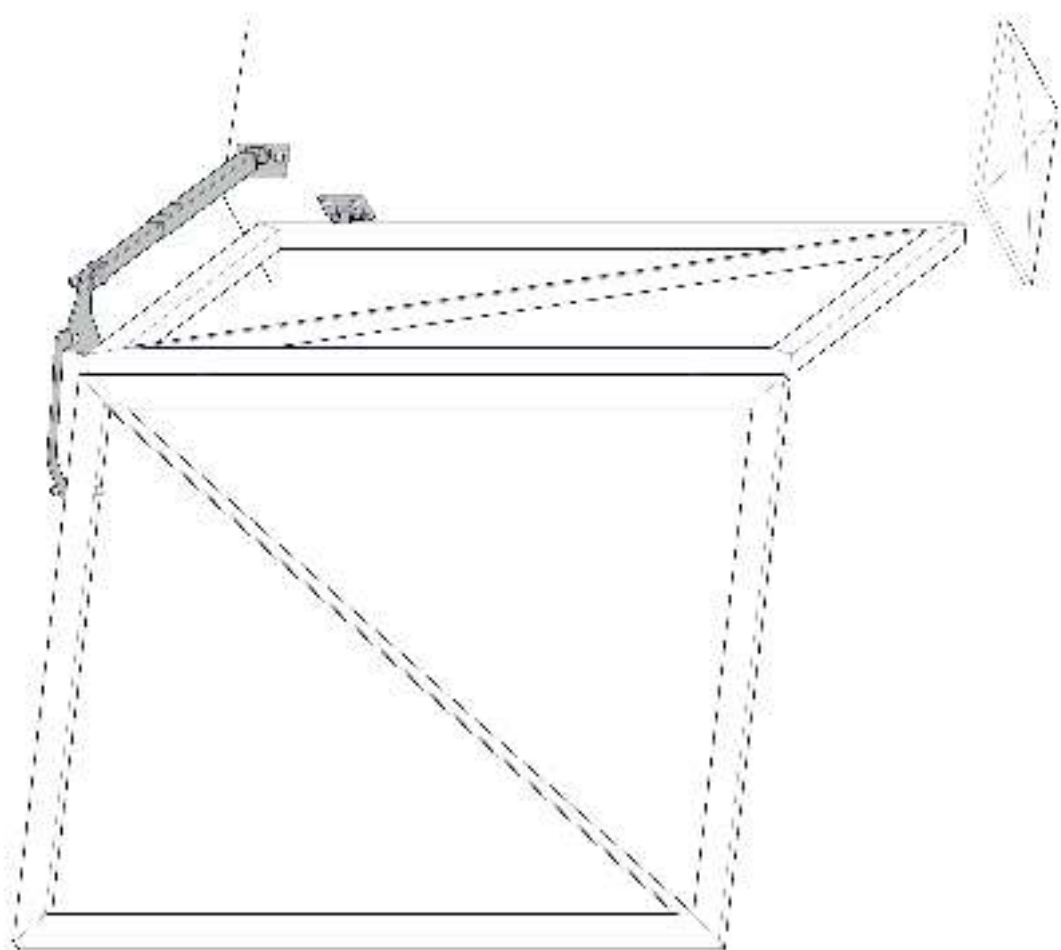


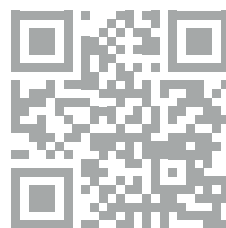


**STEP 8**

**STEP 7**







[www.cais.eu](http://www.cais.eu)